

COMPRESSION FITTINGS

CEPEX PERFORMANCE™ SERIES

DESCRIPTION

Polypropylene (PP) Compression Fittings for PE pressure piping applications.

TUBE

IPS(OD) For use on HDPE Pipe SDR 7.3 thru SDR 17 (Sizes 3/4" - 4")

For use on Sch 40/80 PVC Pipe with SS Gripper Ring (Sizes 3/4" - 2")

CTS(OD) For use on Certified PE Pipe SDR 9 & SDR 11 (Sizes 3/4" - 2")

For use on Cross Linked Pipe PE SDR 9 for Cold Water Only (Sizes 3/4" - 2")

For use on Copper Pipe with CTS SS Gripper Ring (Sizes 3/4" - 1")

WORKING PRESSURE

At 73° F (23° C) 3/4" - 2" rated to 200 PSI working pressure

At 73° F (23° C) 3" - 4" rated to 150 PSI working pressure

FEATURES

Ease of installation

No Inserts Required

One source for all your IPS & CTS needs

Color coded

UV stabilized

Extensively used worldwide

ISO 9001 certified

APPLICATIONS

Water Service

Low Pressure Sewer

Industrial Leachate Collection

Irrigation

Many other uses

SPECIFICATIONS

IPS(OD) ASTM-F714 / ASTM-D3035 / ASTM-D-1599-99 / NSF 61

CTS(OD) ASTM-D2737 / ASTM-D1248 / ASTM-D-1599-99 / NSF 61 / CSA B137.1



Comp x Comp

Coupling
&
Adapter

90° Tee

90° Elbow

End Cap & SS
Gripper Ring



IPS 1/2" - 4"
CTS 3/4" - 2"

IPS 3/4" - 4"
CTS 3/4" - 2"

IPS 1/2" - 4"
CTS 3/4" - 2"

IPS 1/2" - 2"

Comp x Female Thread



IPS 1/2" - 3"
CTS 3/4" - 2"

IPS 1/2" - 3"
CTS 3/4" - 2"

IPS 1/2" - 3"
CTS 3/4" - 2"

IPS 1/2" - 2"
CTS 3/4" - 1"

Comp x Comp Reducing



IPS 3/4" - 2"
CTS 1" - 2"

IPS 3/4" - 3"
CTS 1" - 2"

Comp x Male Thread



IPS 1/2" - 4"
CTS 3/4" - 2"



PARTS

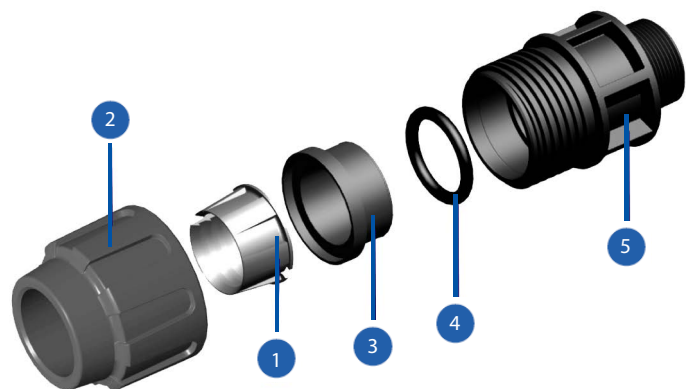
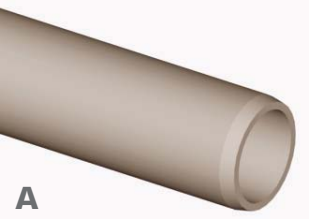
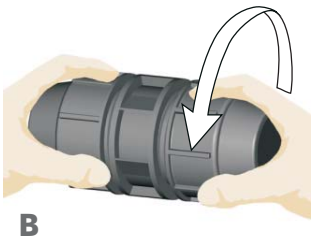


FIG.	Parts	Material
1	Split Ring	POM
2	Nut	PP
3	Insert	PP
4	O-ring	NBR 70 (POTABLE WATER)
5	Body	PP

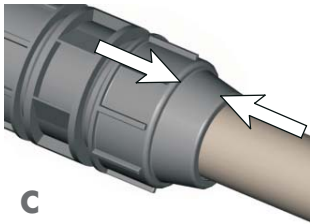
INSTALLATION INSTRUCTIONS



Cut pipe square with pipe cutters. Chamfer the pipe with the beveler tool. Apply neutral lubricant on pipe.



Slacken the ring nut without removing from the body. Check that O-ring and split ring are in proper position.



Insert the pipe end without tightening the nut. Push the fitting until the pipe stops at the O-ring and then push it past the O-ring until it reaches the next stop.



Hand tighten the ring nut then tighten further with a strap / pipe wrench.

TOOLS

We recommend these tools for proper installation:



Beveler



- HDPE Pipe SDR 7.3 - SDR 17
- Sch 40 / 80 PVC Pipe (with SS Gripper Ring)



- PE Pipe (Municipal Service Tubing) SDR 9 & 11
- Cross Linked PE Pipe (PEX) SDR 9 (Cold Water Only)
- Copper Tubing (with SS Gripper Ring)